

TREND 詮道

北京詮道科技有限公司

BEIJING TREND TECHNOLOGY CO.,LTD

山东詮道科技有限公司

SHANDONG TREND TECHNOLOGY CO.,LTD

[Http://www.bjtrend.com](http://www.bjtrend.com)

公司简介



山东詮道科技有限公司的前身是北京詮道科技有限公司，成立于2001年3月，2019年主要生产线搬迁至山东省德州市庆云县经济开发区，占地135亩，建筑物面积4.5万平方米，专业生产莫来石轻质绝热材料，年生产能力5000万块标准砖，可提供各种牌号高品质保温产品，产品畅销国内外，广泛应用于石化、陶瓷、玻璃、钢铁、电解铝、热处理工程等领域的窑炉衬里。公司通过了质量、环境和职业健康标准认证，严格按照美国ASTM标准进行产品质量控制，建立了完善的管理体制和质量控制体系，为企业的可持续发展奠定了坚实的基础发挥着极其重要的作用。此外，我们的另一种产品-锡槽顶盖用高性能陶瓷结构件主要用于浮法玻璃锡槽，是公司独立研发并生产的高级陶瓷材料，打破国外产品的垄断，成功取代国外产品并大量出口，促进了浮法玻璃工业的快速发展。

2010年，公司曾承接国家高技术研究发展计划（863计划）关于玻璃窑用高性能钙长石（六铝酸钙）-莫来石轻质绝热材料工程化关键技术研究课题，并于2014年通过国家验收，是国家级高新技术企业和中关村高新技术园区企业以及国家863计划专业耐火材料核心骨干企业。该产品已批量供应市场，与传统用可燃物造孔不同，直接引入微气孔以提高产品的隔热性能，不仅帮助顾客减少能源消耗，在制造过程中也避免了使用可燃物带来的大气污染。锡槽顶盖用高性能陶瓷结构件产品被列为2005年国家创新基金项目并于2007年顺利通过验收。

为消除对环境的污染，公司使用天然气作为全自动高温隧道窑的燃料，可烧制高品质的莫来石轻质绝热材料。产品出口到五大洲的国家和地区，是全球莫来石绝热材料领域一块高品质品牌，在国内同行业居领先地位。

2024年詮道经营口号：用产品绽放人品，为客户带来喜悦，第一次把事情做对，一根筋干到底，结果只能是成功。

使命：在追求全体员工物质和精神两方面幸福的同时，提供让客户感动的产品和服务，为人类社会进步发展做出贡献。

愿景：成为新材料细分领域的引领者，成就百年幸福企业。

价值观：客户至上，诚信正直，内求利他，艰苦奋斗，开放创新。

叁“0”目标：安全0伤害；客户0投诉；产品、服务0缺陷。

三句箴言：我是一切问题的根源；爱是一切问题的答案；一切问题的解决皆有可能。



Company Profile

Shandong Trend Technology Co., Ltd is a wholly-owned subsidiary of Beijing Trend Technology, which was founded in March, 2001. The production line of Trend was relocated to Qingyun Economic Development Zone, Dezhou City, Shandong Province since 2019, which has a total area of 90000 m² including 45000m² building area. Trend is a world-leading company specialized in producing light-weight insulating materials. The annual production capacity is 50 million standard bricks. Meanwhile Trend provides a variety of brands with high quality insulation products, which we are focusing on supplying the whole package of insulating materials mainly for metallurgical, petrochemical, glass, ceramic, alumina, heat-treatment industries etc. Trend are certificated with ISO9001, 14001, 45001. We have established a scientific management and quality control system by following ASTM standards. We brought our iconic product - high performance ceramic structure for tin bath roof, the company's independent-developed advanced material, into the market which used to be under the control of monopolic foreign products.

In 2010, the company undertook the national high-tech research and development plan for high performance anorthite material in glass kiln (863 Program). In 2014, our research on key technology of engineering mullite lightweight insulation material has been accepted by government, which certify Trend as a state-level high-tech company in insulation industry. This unique product has been supplied to the market, which brings a significant difference from the traditional method of pore-forming by combustibles,. The micro pores are coming from directly forming without any pollutant raw materials in order to improve the insulation performance to the other level. With the excellent performance of our new product, we can not only help customers to reduce energy loss, but also provide an environmentally friendly products to the world. Our new product has been listed in the national innovation fund project in 2005 and successfully passed acceptance testing in 2007.

Meanwhile, we insist on using natural gas as a clean energy resource for our automatic high temperature tunnel kiln. For a better planet, we aim to reduce the negative influences of pollutants during production process. With our belief, the products have been exported to the countries all over the five continents, lighting the way of approaching the global leader in the insulating fire bricks field.

Our Mission: To provide opportunities for the material and intellectual growth of all our employees, and through our joint efforts, contribute to the advancement of society and humankind.

Our Vision: To be the global leader of energy-saving lining solutions for industrial furnaces; to be a century-old enterprise

Our Values: Customer First, Honesty and Integrity, Introspection and Altruism, Diligence and Preservation, Research and Innovation.

		BTT 23L	BTT 23	BTT 23HS	BTT 24	BTT 25	BTT 25HS	
Classification Group	ASTM C 155	23	23	23	-	-	-	
分类等级	ISO 2245	125-0.5-L	125-0.6-L	125-0.7	130-0.7-L	135-0.8-L	135-1.0	
Classification Temperature	°C	1260	1260	1260	1315	1380	1380	
分类温度	°F	2300	2300	2300	2400	2500	2500	
Density	ASTM C 134	kg/m ³	480	590	670	670	800	1000
密度		lb/ft ³	30	37	42	42	50	69
Cold Crushing Strength	ASTM C 133	MPa	1.5	1.2	2.1	2.1	2.5	3.0
耐压强度		psi	217	174	305	305	362	435
Modulus of Rupture	ASTM C 133	MPa	0.8	1.0	1.3	1.3	1.4	3.1
抗折强度		psi	116	145	189	189	203	450
Permanent Linear Change after 24hrs. soaking at Temperature	ASTM C 210	%	-0.1	-0.1	-0.2	-0.5	-0.5	-0.5
重烧线变化 24小时, 对应的温度下		°C (°F)	1230 (2250)	1230 (2250)	1230 (2250)	1285 (2350)	1350 (2450)	1350 (2450)
Reversible Linear Thermal Expansion		% (max.)	0.45	0.6	0.6	0.6	0.7	0.5
热膨胀系数								
Thermal Conductivity (ASTM C 182) at mean Temperature °C (°F)	200 (392)	W/mK (BTU-in/hr.ft ² , °F)	0.10 (0.69)	0.16 (1.11)	0.18 (1.25)	0.18 (1.25)	0.20 (1.39)	0.29 (2.01)
	400 (752)		0.12 (0.83)	0.19 (1.32)	0.21 (1.46)	0.21 (1.46)	0.21 (1.46)	0.32 (2.22)
	600 (1112)		0.15 (1.04)	0.23 (1.59)	0.25 (1.73)	0.25 (1.73)	0.23 (1.59)	0.36 (2.50)
导热系数 (ASTM C 182) 在平均温度 °C (°F)	800 (1472)		0.17 (1.18)	0.28 (1.94)	0.30 (2.08)	0.30 (2.08)	0.27 (1.87)	0.40 (2.77)
	1000 (1832)		0.19 (1.32)	0.33 (2.29)	0.35 (2.43)	0.35 (2.43)	0.32 (2.22)	0.45 (3.12)
	1200 (2192)		-	-	-	-	-	-
Chemical Analysis	Al ₂ O ₃	%	45.0	45.0	45.0	43.0	50.0	48.0
	SiO ₂		48.0	49.6	49.0	51.6	47.6	47.6
	Fe ₂ O ₃		0.65	1.0	1.0	1.0	1.0	1.0
化学成份	TiO ₂		1.0	1.0	1.0	1.0	1.0	1.0
	CaO + MgO		3.0	1.6	1.6	1.6	0.8	0.8
	Na ₂ O + K ₂ O		0.85	1.8	1.8	1.8	1.6	1.6
Dimensional Tolerances	L x W x T	mm	± 1	± 1	± 1	± 1	± 1	± 1
尺寸公差								

Availability and Packaging:

All standard brick sizes (like ISO: 230x114x64, 230x114x76mm / 220x110x60mm / US 9"x4 1/2"x2 1/2") and slabs up to 800x500x150mm are available! BTT Insulating Firebricks are packed lose on film wrapped pallets. Cartonage packaging on request is possible.

产品规格和包装方式:

BTT可以生产所有标准砖的尺寸(如ISO: 230x114x64, 230x114x76mm/220x110x60mm/US9"x41/2"x21/2")和板800x500x150mm! BTT 轻质绝热砖托盘包装, 外裹拉伸膜, 也可以用纸箱包装。

Note:

All technical data given in our brochures are average values on the basis of proven testing methods and are subject to generally applicable production tolerances. They can be modified without prior notice (e.g. due to the new raw materials or to technical development). Upon request we will send you our Material Safety Data Sheets.

注意:

上表中所有的技术指标都基于标准检测方法上的平均值, 适用于一般的使用情况。指标可以在不提前通知的情况下进行改进(如使用新的原料或者技术的改进), 我们可以按照要求发送产品安全数据表。

		BTT 26	BTT 26A	BTT 26RA	BTT 26HS	BTT 28	BTT 30	BTT 32	
Classification Group	ASTM C 155	26	-	26	-	28	30	32	
分类等级	ISO 2245	140-0.8-L	140-0.8-L	140-0.8-L	140-0.9	150-0.9-L	160-1.0-L	170-1.2-L	
Classification Temperature		°C	1430	1430	1430	1430	1540	1650	1760
分类温度		°F	2600	2600	2600	2600	2800	3000	3150
Density	ASTM C 134	kg/m ³	800	800	790	1000	880	1000	1200
密度		lb/ft ³	50	50	49	62	55	62	75
Cold Crushing Strength	ASTM C 133	MPa	2.2	2.2	2.0	3.0	2.5	2.5	3.5
耐压强度		psi	319	319	290	435	362	362	507
Modulus of Rupture	ASTM C 133	MPa	1.5	1.5	1.3	2.0	1.6	1.7	2.0
抗折强度		psi	217	217	189	290	232	246	290
Permanent Linear Change after 24hrs. soaking at Temperature	ASTM C 210	%	-0.4	-0.2	-0.2	-0.4	-0.4	-0.3	-0.9
重烧线变化 24小时, 对应的温度下		°C (°F)	1400 (2550)	1400 (2550)	1400 (2550)	1400 (2550)	1510 (2750)	1620 (2950)	1730 (3150)
Reversible Linear Thermal Expansion		% (max.)	0.7	0.7	0.7	0.6	0.6	0.9	1.1
热膨胀系数									
Thermal Conductivity (ASTM C 182) at mean Temperature °C (°F)	200 (392)	W/mK (BTU-in/hr.ft ² , °F)	-	-	-	-	-	-	-
	400 (752)		0.21 (1.46)	0.21 (1.46)	0.27 (1.87)	0.29 (2.01)	0.31 (2.15)	0.40 (2.77)	0.49 (3.40)
600 (1112)	0.23 (1.59)		0.23 (1.59)	0.30 (2.08)	0.32 (2.22)	0.33 (2.29)	0.41 (2.84)	0.50 (3.47)	
800 (1472)	0.28 (1.94)		0.28 (1.94)	0.32 (2.22)	0.35 (2.43)	0.35 (2.43)	0.43 (2.98)	0.51 (3.54)	
1000 (1832)	0.33 (2.29)		0.33 (2.29)	0.35 (2.43)	0.38 (2.63)	0.38 (2.63)	0.44 (3.05)	0.53 (3.67)	
1200 (2192)	0.36 (2.50)		0.36 (2.50)	0.39 (2.70)	0.41 (2.84)	0.41 (2.84)	0.47 (3.26)	0.54 (3.74)	
Chemical Analysis	Al ₂ O ₃	%	50.0	52.0	55.0	50.0	64.0	70.0	77.0
	SiO ₂		45.9	44.0	37.8	45.9	33.2	27.5	20.9
	Fe ₂ O ₃		0.9	0.9	0.7	0.9	0.7	0.65	0.6
	TiO ₂		1.0	1.0	0.7	1.0	0.7	0.75	0.5
	CaO + MgO		0.7	0.7	0.5	0.7	0.5	0.3	0.3
	Na ₂ O + K ₂ O		1.5	1.5	1.3	1.5	0.9	0.8	0.7
Dimensional Tolerances	L x W x T	mm	± 1	± 1	± 1	± 1	± 1	± 1	± 1
			尺寸公差						

Availability and Packaging:

All standard brick sizes (like ISO: 230x114x64, 230x114x76mm / 220x110x60mm / US 9"x4 1/2"x2 1/2") and slabs up to 800x500x150mm are available!
BTT Insulating Firebricks are packed lose on film wrapped pallets. Cartonage packaging on request is possible.

产品规格和包装方式:

BTT可以生产所有标准砖的尺寸(如ISO: 230x114x64, 230x114x76mm / 220x110x60mm / US 9"x4 1/2"x2 1/2")和板800x500x150mm!
BTT 轻质绝热砖托盘包装, 外裹拉伸膜, 也可以用纸箱包装。

Note:

All technical data given in our brochures are average values on the basis of proven testing methods and are subject to generally applicable production tolerances.
They can be modified without prior notice (e.g. due to the new raw materials or to technical development). Upon request we will send you our Material Safety Data Sheets.

注意:

上表中所有的技术指标都基于标准检测方法上的平均值, 适用于一般的使用情况。
指标可以在不提前通知的情况下进行改进(如使用新的原料或者技术的改进), 我们可以按照要求发送产品安全数据表。

		BTT 2600		BTT 3000		BTT 3200	
Classification Group	分类等级	ASTM C 199	Medium Duty	Super Duty	Super Duty	Super Duty	Super Duty
Classification Temperature	分类温度	°C	1430	1650	1760		
		°F	2600	3000	3200		
Density	密度	kg/m ³	1700	1900	2000		
		lb/ft ³	106	118	125		
Modulus of Rupture when dried	抗折强度 干燥状态下	MPa	12.0	18.0	16.0		
		psi	1740	2610	2320		
Permanent Linear Change when dried	重烧线变化 干燥状态下	%	-0.2	-0.2	-0.4		
		°C (°F)	1300 (2350)	1350 (2450)	1400 (2550)		
Chemical Analysis	化学成份	Al ₂ O ₃	35.0	43.0	54.0		
		Fe ₂ O ₃	1.4	1.2	1.0		
Quantity required to set 1000 Beq. This amount depends upon porosity of the brick and thickness of the joint. The figure given is for trowelled joint, approx. 2mm thick.	1000块标准砖的使用量 此使用量指用在有气孔的砖上的厚度方向上的粘接，平均粘接厚度2MM。	mm	180	200	200		

Availability and Packaging:

BTT Mortars are delivered ready-to-use, in metal drums à 30kg and are packed on film wrapped pallets.

产品规格和包装方式:

BTT胶泥是随时可用的，30公斤/桶，铁桶码放在托盘上，外裹拉伸膜。

Note:

All technical data given in our brochures are average values on the basis of proven testing methods and are subject to generally applicable production tolerances. They can be modified without prior notice (e.g. due to the new raw materials or to technical development). Upon request we will send you our Material Safety Data Sheets.

注意:

上表中所有的技术指标都基于标准检测方法上的平均值，适用于一般的使用情况。指标可以在不提前通知的情况下进行改进（如使用新的原料或者技术的改进），我们可以按照要求发送产品安全数据表。

		BTT 135		BTT 140	
Classification Group	ASTM C 155		-		-
分类等级	ISO 2245		135-1.2		140-1.2
Classification Temperature		°C	1380		1430
分类温度		°F	2500		2600
Density	ASTM C 134	kg/m ³	1200		1250
密度		lb/ft ³	75		78
Cold Crushing Strength	ASTM C 133	MPa	15.0		20.0
耐压强度		psi	2175		2900
Permanent Linear Change after 24hrs. soaking at Temperature		%	-1.0		-1.5
重烧线变化 24小时, 对应的温度下		°C (°F)	1350 (2450)		1400 (2550)
Reversible Linear Thermal Expansion		% (max.)	0.6		0.6
热膨胀系数					
Thermal Conductivity (ASTM C 182) at mean Temperature °C (°F)	200 (392)	W/mK (BTU-in/hr.ft ² , °F)	0.29 (2.01)		-
	400 (752)		0.30 (2.08)		0.41 (2.84)
	600 (1112)		0.35 (2.43)		0.43 (2.98)
导热系数 (ASTM C 182) 在平均温度°C (°F)	800 (1472)		0.39(2.70)		0.47 (3.26)
	1000 (1832)		0.35 (2.43)		0.53 (3.67)
	1200 (2192)		-		0.57 (3.95)
Chemical Analysis	Al ₂ O ₃	%	40.0		40.0
化学成份	Fe ₂ O ₃		2.2		2.0

Availability and Packaging:

All standard brick sizes (like ISO: 230x114x64, 230x114x76mm / 220x110x60mm / US 9"x4 1/2"x2 1/2") and slabs up to 800x500x150mm are available!
BTT Insulating Firebricks are packed lose on film wrapped pallets. Cartonage packaging on request is possible.

产品规格和包装方式:

BTT可以生产所有标准砖的尺寸(如ISO: 230x114x64, 230x114x76mm/220x110x60mm/US9"x41/2"x21/2") 和板800x500x150mm!
BTT 轻质绝热砖托盘包装, 外裹拉伸膜, 也可以用纸箱包装。

Note:

All technical data given in our brochures are average values on the basis of proven testing methods and are subject to generally applicable production tolerances.
They can be modified without prior notice (e.g. due to the new raw materials or to technical development). Upon request we will send you our Material Safety Data Sheets.

注意:

上表中所有的技术指标都基于标准检测方法上的平均值, 适用于一般的使用情况。
指标可以在不提前通知的情况下进行改进(如使用新的原料或者技术的改进), 我们可以按照要求发送产品安全数据表。

			BTT LSB-0.6	BTT LSB-0.8	BTT LSB-1.0	BTT LSB-1.2
Classification Temperature		°C	1400	1400	1500	1500
分类温度		°F	2500	2500	2800	2800
Density		kg/m ³	600	800	1000	1200
密度		lb/ft ³	38	50	64	76
Cold Crushing Strength		MPa	1.5	2.5	2.0	5.0
耐压强度		psi	218	363	-	-
Permanent Linear Change after 24hrs. soaking at Temperature		%	-0.6	-0.5	-0.5	-0.5
重烧线变化在相应温度下加热24小时		°C (°F)	1350 (2470)	1350 (2470)	1500 (2740)	1500 (2740)
Thermal Conductivity at mean Temperature °C (°F)	600 (1112)	W/mK	0.25	0.29	0.33	0.39
	800 (1472)		0.28	0.31	0.36	0.41
导热系数在相应温度下 °C (°F)	1000 (1832)	(BTU-in/hr.ft ² , °F)	0.31	0.34	0.39	0.44
			-	-		
Chemical Analysis	Al ₂ O ₃	%	0.90	0.80	0.80	0.80
	SiO ₂		90.0	91.0	92.0	93.0
化学成份 Fe ₂ O ₃	0.62		0.52	0.57	0.60	
CaO	3.30		3.00	2.70	2.50	
Dimensional Tolerances						
尺寸公差	L x W x T	mm		±1		±1

Availability and Packaging:

All standard brick sizes (like ISO: 230x114x64, 230x114x76mm / 220x110x60mm / US 9"x4 1/2"x2 1/2") and slabs up to 640x450x76mm are available! BTT Insulating Bricks are packed loose on film wrapped pallets. Cartonage packaging on request is possible.

产品规格和包装方式:

BTT可以生产所有标准砖的尺寸 (如 ISO: 230x114x64, 230x114x76mm / 220x110x60mm / US 9"x4 1/2"x2 1/2") 和板 640x350x80mm BTT轻质绝热砖托盘包装, 外裹拉伸膜, 也可以用纸箱包装。

Note:

All technical data given in our brochures are average values on the basis of proven testing methods and are subject to generally applicable production tolerances. They can be modified without prior notice (e.g. due to the new raw materials or to technical development). Upon request we will send you our Material Safety Data Sheets.

注意:

上表中所有的技术指标都基于标准检测方法上的平均值, 适用于一般的使用情况。指标可以在不提前通知的情况下进行改进 (如使用新的原料或者技术的改进), 我们可以按照要求发送产品安全数据表。

作为浮法玻璃成型阶段重要的组成部分—锡槽顶盖有着非常重要的作用，我公司生产的锡槽顶盖系统由面砖、吊挂砖和桥砖组成，吊挂件采用耐高温镍铬合金钢，砖与砖之间的连接采用咬合的方式，配以高性能的优质轻质莫来石保温砖，有效的避免了热能的损失，大大降低了运行成本。我公司拥有自主的结构设计中心，能够按照您的需要提供完整的锡槽顶盖的设计方案，山东詮道科技限公司的目标是成为国内顶级的高质量的锡槽顶盖设计商与制造商。

硅线石砖

作为锡槽顶盖的热面材料，山东詮道科技的硅线石砖采用高纯莫来石原料，超细氧化铝微粉，特殊工艺配制的复合结合剂，经高温烧结而成。并可提供各种异型和大型产品，特别是超大型入口前过梁大砖。

产品主要特性

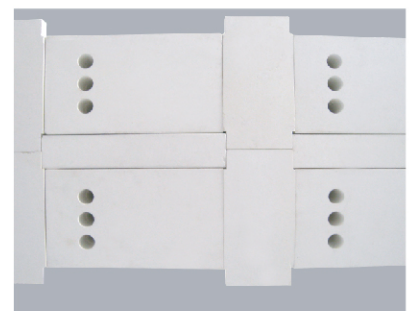
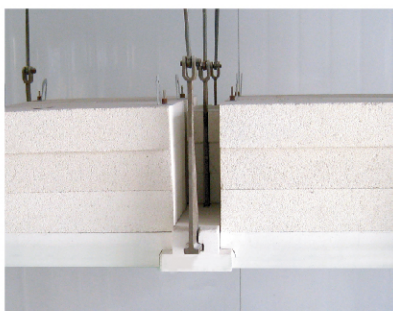
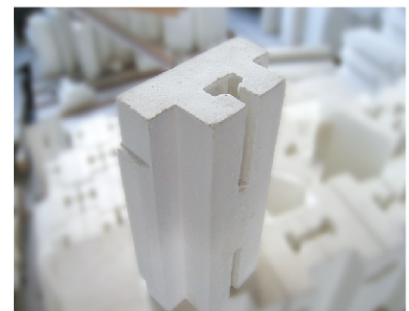
- 优良的热震稳定性
- 高机械强度
- 高尺寸精度
- 超长的使用寿命
- 莫来石轻质砖和气硬性配套耐火泥

莫来石轻质砖和气硬性配套耐火泥

BTT绝热砖根据分类温度1260° C to 1730° C (2300 - 3150° F) 进行分组分类。产品有国际通用尺寸的各种标砖和其它各种异型块，可应用于窑炉和热工设备的热面和背衬。

产品主要特性

- 优良的绝热性能
- 高机械强度
- 超轻的体密
- 良好的热震稳定性



Classification Group		Silliminate Firebrick	Mullite Firebrick
分类等级		硅线石砖	莫来石砖
Density	kg/m ³	2250	2700
密度	lb/ft ³	140	168
Cold Crushing Strength	MPa	60	60
耐压强度			
Appearance Porosity	%	21	18
显气孔率			
Chemical Analysis %	Al ₂ O ₃	58.0	78.0
	SiO ₂	-	-
	Fe ₂ O ₃	0.6	0.4
	TiO ₂	-	-
Dimensional Tolerances	≤300mm	± 1.0	± 1.0
	≥300mm	± 1.5	± 1.5
尺寸公差			

Note:

All technical data given in our brochures are average values on the basis of proven testing methods and are subject to generally applicable production tolerances. They can be modified without prior notice (e.g. due to the new raw materials or to technical development). Upon request we will send you our Material Safety Data Sheets.

注意:

上表中所有的技术指标都基于标准检测方法上的平均值, 适用于一般的使用情况。指标可以在不提前通知的情况下进行改进 (如使用新的原料或者技术的改进), 我们可以按照要求发送产品安全数据表。

Technical Data

技术指标

BTT MP-1000 Block		
Classification Temperature	分类温度	1000°C
Color	颜色	gray / 灰色
Bulk Density	体积密度	270 Kg/m ³ ± 10%
Thermal Conductivity @ Mean Temp.	各个温度下的热导率	100°C: 0,020 W/mK 200°C: 0,021 W/mK 300°C: 0,023 W/mK 400°C: 0,025 W/mK
Standard Sizes	标准尺寸	1000 x 600 mm Special cuts and sizes on request 根据需求的特殊切裁
Available Thicknesses	可用厚度	10, 15, 20, 25, 30, 40, 45 and 50 mm

Note:

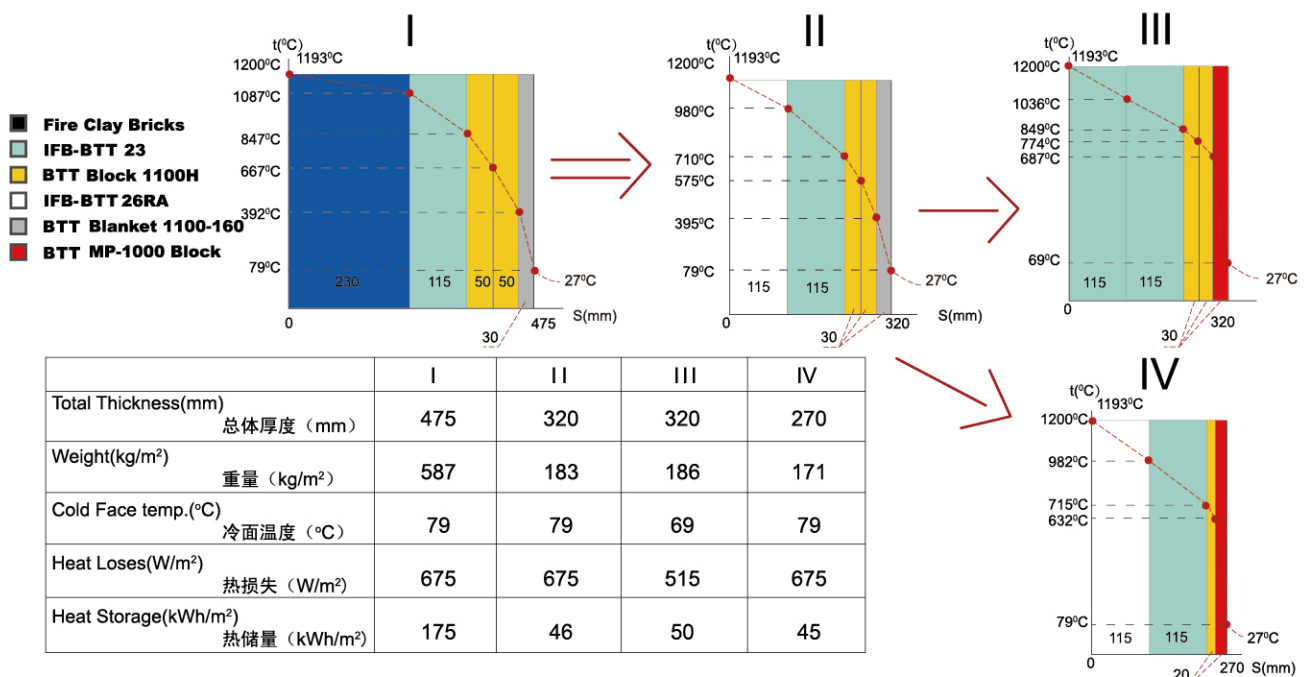
All technical data given in our brochures are average values on the basis of proven testing methods and are subject to generally applicable production tolerances. They are subject to change without notice (e.g. due to new raw materials or to technical development). Material Safety Data Sheets (MSDS) are available on request.

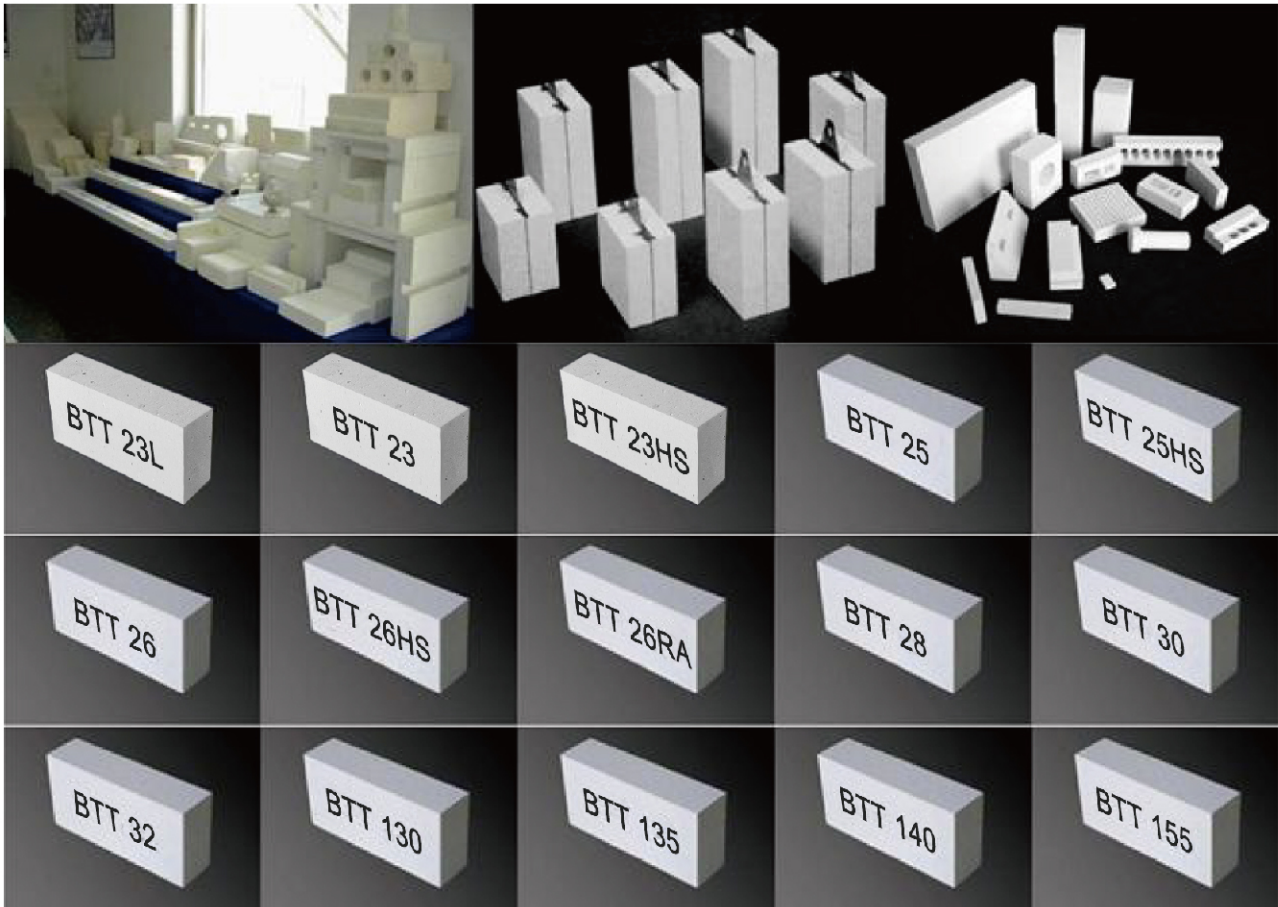
注解:

上表中所有的技术指标都基于标准检测方法上的平均值，适用于一般的使用情况。指标可以在不提前通知的情况下进行改进（如使用心得原料或者技术改进），我们可以按照要求发送产品安全数据表。

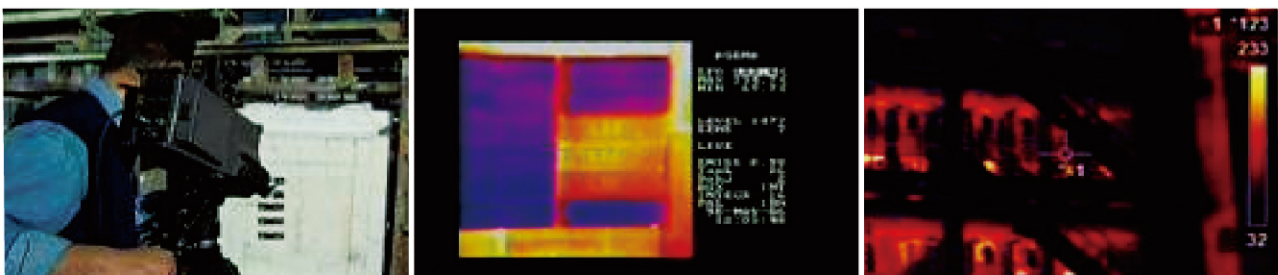
Insulating Properties Comparison

绝热特性比较



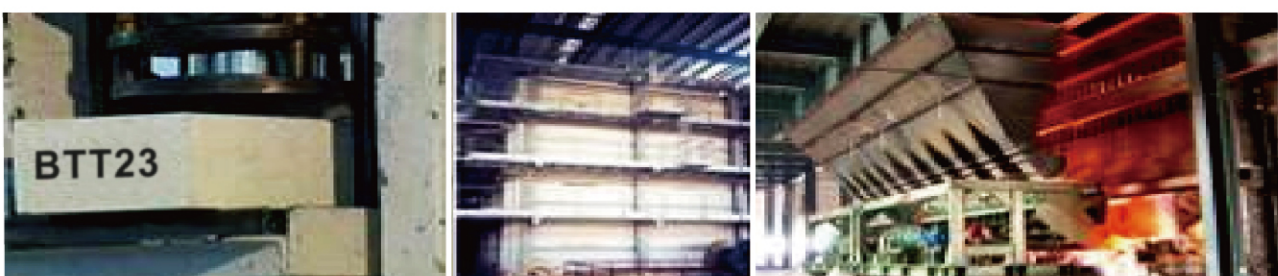


低导热率 High Insulating Value



由于其轻质具有很好的隔热效果，可使窑炉厚度变薄，减少热损耗。
The light weight and high insulating value make furnace walls thinner, and can save much of the energy.

高强度 High Strength



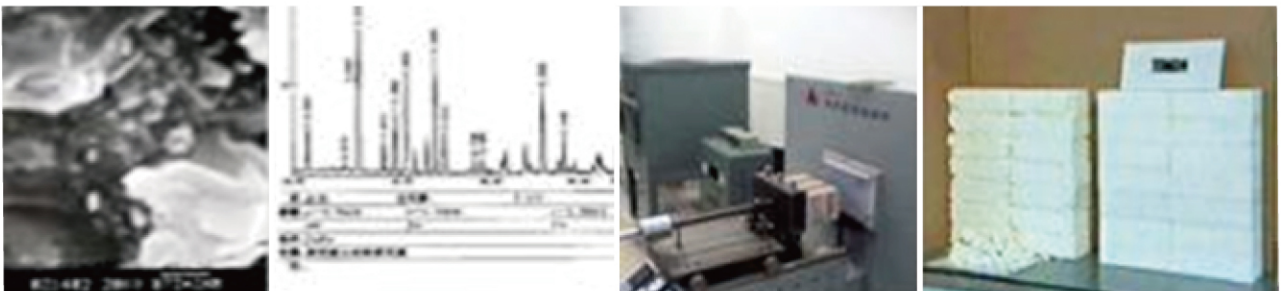
冷、热态耐压强度高、荷重软化性能优异，可延长窑炉使用寿命
The high compressive strength of insulating firebricks allows self-supporting structures at elevated temperature, IFB are compatible with dense firebrick, and add strength to the whole construction.

低热熔 Low heat storage



由于其轻质和低导热率，BTT系列砖蓄积很少的热能，在间歇操作与连续加热炉各种窑中节能效果明显。
TREND IFB can store low heat and have good effect on intermittent furnace.

良好的热震稳定性 Good Heat Shock Resistant



延长窑炉的使用寿命，并防止因窑炉高、低温频繁温度转换而产生断裂、剥落、粉碎、掉渣的现象发生，抗破坏性能优异。

The age of the furnaces that using TEND IFB can be stretched and avoid spoiling.

尺寸精度高 Accurate Dimension



加快砌筑速度，砖缝薄且整齐一致，保证砖筑整体性强，窑炉稳定性高。

The precise measurements make the joints small and uniformity, so courses of the wall can be loaded quickly and easily, and the result is stronger, tighter, refractory lining in less heat loss through the joints.

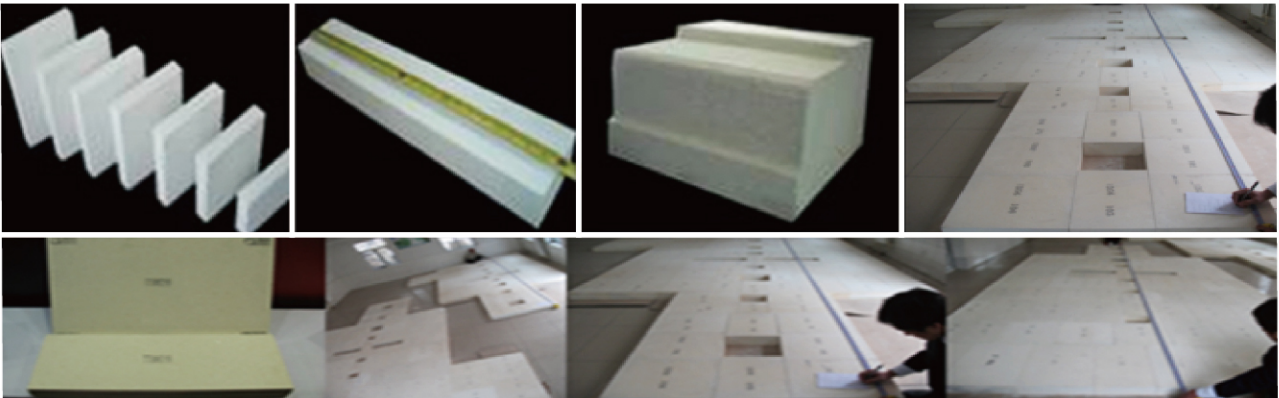
低杂质含量 High purity



具有非常低的铁和碱金属抵熔物含量，因而耐火度高。较高的氧化铝含量使其在还原气氛下仍保持良好的隔热性能。

The very low iron and alkali flux content confers good refractoriness and the high alumina content contributes to both of their stability and insulating in reducing atmosphere.

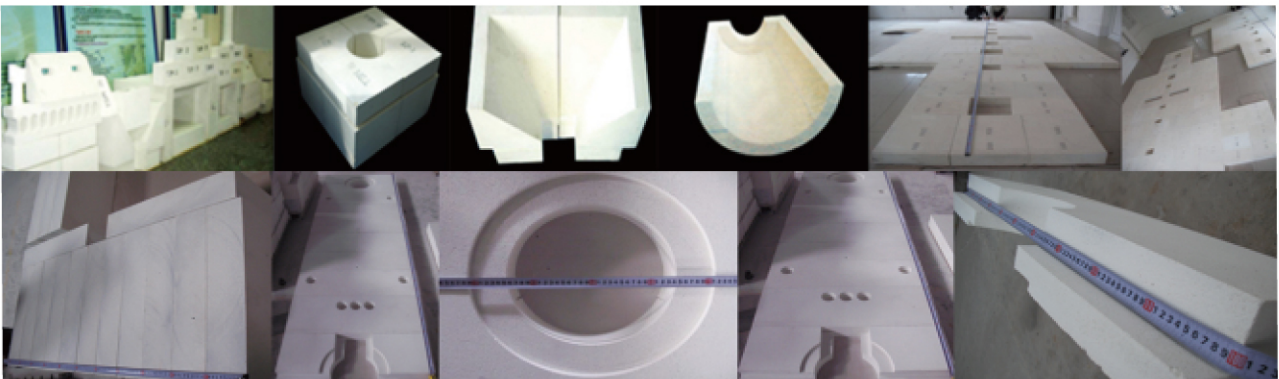
大砖块或坯块 Large specification



可以提供的规格有900×500×100mm, 610×230×76mm,或308×305×158 mm, 最大可加工1000mm长度、600mm宽度的制品, 也可加工成特殊形状, 以减少砌砖块数和砌缝。

The biggest dimension of the bricks that We are provide are as 900×500×100mm, 610×230×76mm, and 308×305×158mm, even 1000mm in length and 600mm in width and other dimensions as customers required and the brick can be machined to special shape, reducing the brick work joints and the number of bricklaying.

异型块 Available Shapes



除了标准尺寸的砖以外, 可提供的TDM系列隔热砖还包括预加工的异型砖, 非常大块的砖可由两块或两块以上的大坯块粘贴而成, 这种独特的大坯块可最大限度的减少成品件的构成块数和粘贴缝。

In addition to the great number of standard sizes available, insulating firebricks are also available in special cemented or machined shapes. The unique large slab means that a finished Shape will have fewer joints fewer joint than shapes made from any other IFB manufacture.



公司使命

在追求全体员工物质和精神两方面幸福的同时，提供让客户感动的产品和服务，为人类社会进步发展做出贡献。

Our Mission

To pursue the happiness of all employees both materially and spiritually, while providing products and services that inspire customers and contributing to the progress and development of human society.

公司愿景

成为新材料细分领域的引领者，成就百年幸福企业。

Our Vision

To be the global leader in segmentation area of New Materials ; To be a century-old happiness enterprise.

核心价值观

客户至上，诚信正直，内求利他，艰苦奋斗，开放创新。

Our Values

Customer First, Honesty and Integrity, Introspection and Altruism, Diligence and Persistence, Opening-up and Innovation.
